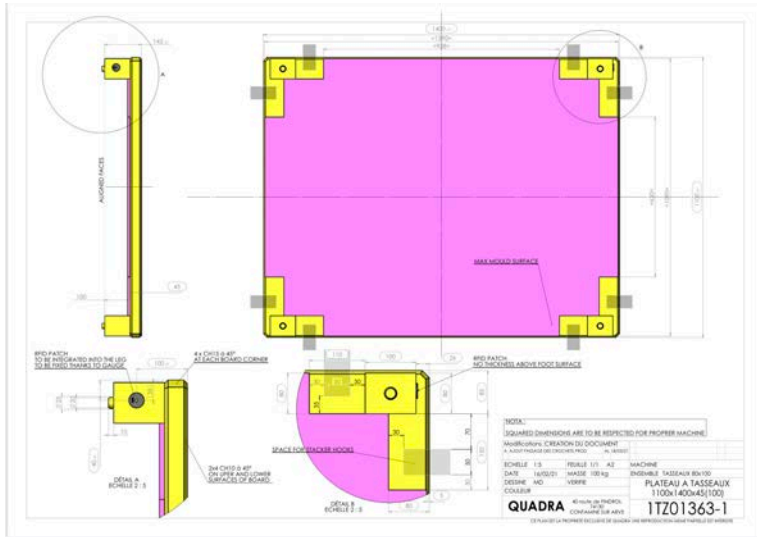


Case Study : Polyurethane Multiple Mould Format

DEMOULDING BY ROBOTOC INTEGRATOR ON POLYURETHANE PALLET BOARDS

The main focus of selecting Polyurethane Pallet boards is to give extreme performance with high efficiency. Whether production boards are made from pine or larch, with polyurethane coating or all-plastic boards - the best production board for your individual requirements.



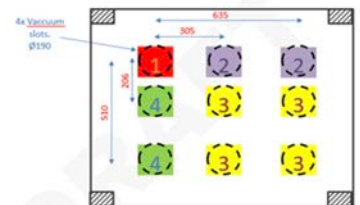
Polyurethane Pallet boards



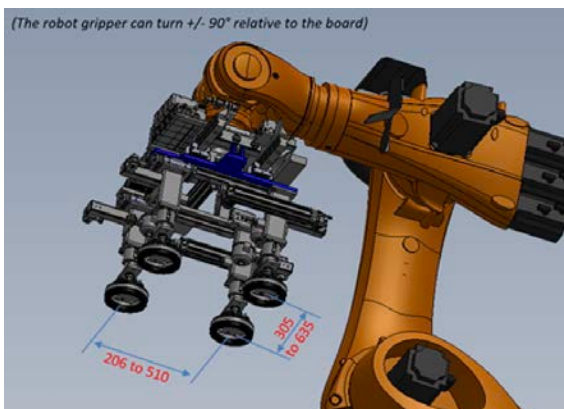
Efficient production lines need a transport medium in addition to high-quality polyurethane moulds. Polyurethane Pallet boards with our polyurethane moulds create an efficient system for manufacturing wetcast concrete products.

QUADRA MACHINERY - Robotic Integrator

The automation has become inescapable in the concrete industry, and provides new handling solutions allowing the automation of repetitive and time-consuming tasks for the operators, the reduction of the maintenance and the gain in productivity. Quadra design custom-made technical solutions. They applied their expertise in automated process, as well as our competence in terms of development, to provide handling solutions that are adapted to the current and future needs of our clients. Quadra integrated the robot of the brand Kuka (leading manufacturer of industrial robots). They design and manufacture the handling clamp and the required automatism programs



The robot tool can adapt itself down to 206mm.



Kuka robot with flexible vacuum suction cup. Unlike conventional drycast manufacturing, the later block surface in wetcast production is in the mould base on the underside. These hardened pool slabs will be turned and packaged on the packaging line on pallets with spacers

